

Colourless

HAIR LIGHTENER



Need some help?

To watch a step by step guide
please visit our website

You can email our customer care team at
customer@colourless.co.uk for more information

     colourless.co.uk

WARNINGS

READ CAREFULLY BEFORE USE



It is vital that a strand and patch test are conducted before using this product. Please see below for guidance

- Contains Ammonia and Hydrogen Peroxide.
- Keep out of reach of children.
- Use Bleach on dry hair.
- Recently bleached, permed or tinted hair may not be suited to this product.
- Ensure that suitable gloves are worn at all times.
- Avoid leaving the product in direct sunlight.
- Keep products stored in a cool and dry place.
- Do not use any metallic accessories.
- Keep products away from jewellery, clothing and furniture.
- Use in a well ventilated area and do not breathe in fumes.
- Do not mix more than 1 sachet of powder bleach with 1 bottle of cream peroxide.
- If product gets in your eyes wash out with cold water immediately and seek medical advice.
- Dispose of any leftover contents.
- Unsuitable for some hair extensions. Please check suitability before applying.
- Not suitable for Henna treated or Afro textured Hair.

DO NOT USE

- If you are pregnant.
- If your scalp is sensitive or irritated.
- If you have had any previous reactions.
- If you have previously lightened, bleached, spray lightened or coloured using metallic salt products.
- On any other body hair.
- On children under 16.

If you require further information, please contact us on the details shown to the left.

You may also need

- Highlighting cap for options 2 and 3
- Old towels to protect skin, clothing and furniture
- Timer/Watch
- Plastic teaspoon
- Petroleum Jelly

Ensure you check your hair every 5 minutes to review your desired result

Please be certain you have enough Go Blonde Hair Lightener to cover all of the hair you wish to lighten in a single application

Patch Test & Strand Test

Combine one and half teaspoons of Cream Peroxide and half a teaspoon of Powder bleach in the mixing bath

Patch Test

- Clean a small area of the skin behind your ear.
- Using a piece of cotton wool, apply a small amount of the mixture to the cleansed area.
- Leave for 48 hours, be sure to check regularly.
- If you notice any irritation or swelling to the skin wash off and seek medical advice immediately.
- If there is no reaction wash off and continue the process.

Strand Test

In order to check your shade development time you must:

- Separate a small amount of hair from a less visible area and apply mixture with the brush provided in your Colourless Hair Lightener kit.
- Check after 5 minutes, then after a maximum of 10 minutes, wipe away the mixture from your hair and review colour.
- Continue this process by adding more mixture and then review the colour every 5 minutes until you have reached your desired colour.
- Once you have achieved your desired colour, make a note of the time it took you to develop and apply this when doing a full application.
- Do not exceed the recommended development times
- If your hair deteriorates or gives off heat, you should stop the process immediately and wash off.
- The results of your final colour can vary depending on both your current hair colour and natural hair colour.



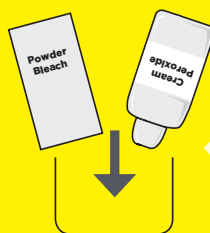
We recommend that you do not process more than 35 minutes without checking your desired result. Most applications should be complete in 35 minutes.

Processing time can be up to a MAXIMUM of 35 minutes on options 1-3, however you must check every 5 minutes to review your desired result.

Preparing the mixture



Ensure that gloves are worn at all times.



Mix the Cream Peroxide and the Powder Bleach into the mixing bath.



Using a plastic teaspoon, mix thoroughly until you have a smooth consistency.



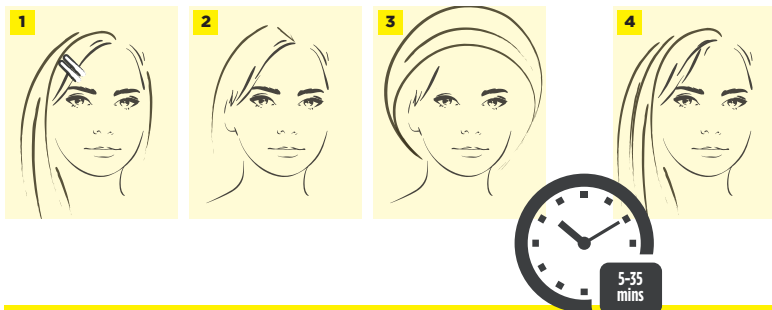
Before you apply, use some Petroleum Jelly (check for allergies beforehand) sparingly around your hairline to help avoid discolouration.



Using the brush applicator apply the mixture to clean hair.

Follow options 1, 2 or 3

If you have thick hair, or it is longer than shoulder length you may require two packs or more of Colourless hair lightener.

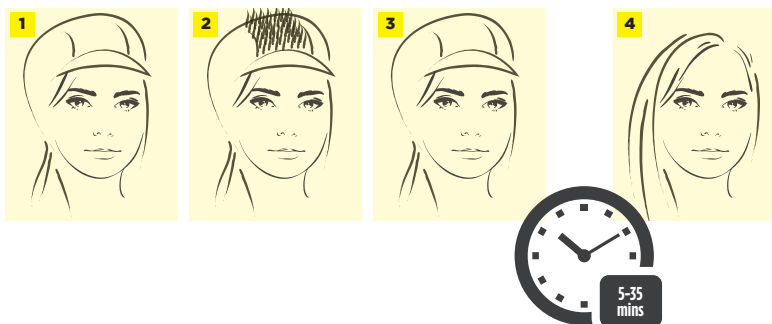


Always apply hair lightener in the following order: Mid-lengths, tips and finally roots

Option 1 FULL HEAD

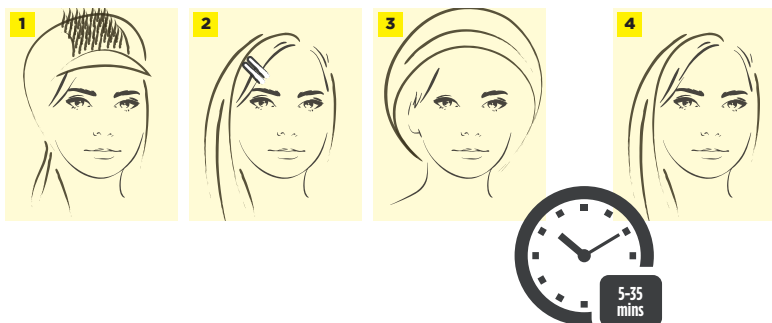
1. Hair must be dry. Section hair into 4 sections, then start at the lower back making your way forwards and gradually down the sides. Ensure that you have applied the mixture evenly. For longer hair, apply to mid-lengths by applying 3cm away from the scalp, then the ends followed by the roots.
2. Leave for 5 minutes and then apply to root area.
3. Put on the processing cap. Leave the cap on for your own development time, but be sure to check every 5 minutes.
4. Take off the processing cap. Rinse hair and shampoo using colourless soothing shampoo followed preferably by an anti-oxidant conditioner. Dry hair and style as normal.

Option 2 HIGHLIGHTING



1. Before starting, ensure that hair is clean and dry. For even colour coverage comb hair through to remove any tangles, apply cap and starting at the front pull through the hair strands to be lightened. For maximum highlights pull through every hole or every other for a more subtle result. Ensure the hair strands are fully pulled through for even coverage.
2. Put on the processing cap and leave on hair for your personal development time, ensuring that you check every 5 minutes. In some cases 5 minutes will be long enough.
3. Take off the processing cap and rinse hair. Next remove the highlighting cap and shampoo using Colourless soothing shampoo followed preferably by an anti-oxidant conditioner. Dry hair and style as normal.

Option 3 TREATING ROOTS



1 Highlight Roots

In order to treat roots of highlights, you must pull the highlighted strands of hair through the highlighting cap and apply mixture to the roots.

2 Full Head Roots

- a. Apply mixture to the roots, avoiding the tips and mid lengths.
- b. Put on the processing cap. Leave cap on for your own development time, but be sure to check every 5 minutes.
- c. If you are treating highlight roots, follow step 3 from option 2. If you are treating a full head of roots, take off the processing cap and rinse hair. Shampoo using Colourless soothing shampoo followed preferably by an anti-oxidant Conditioner. Dry and style as normal.